



**FIGT CONFERENCE 2008**

**Houston, TX**

---

***TCK EXPERIENCES &  
ATCK WORK CHOICES***

***ANN BAKER COTTRELL  
San Diego State University***



# ATCK study

---

- 604 American ATCKs
- 25 - 90 years old
- Abroad 1 - 19 child/teen years
- Representing all sponsor categories
- Living in the U.S. at time of study



# Presentation

---

- Occupational choices
  - Current occupation & employer
  - International dimensions of career history
  - Occupational history
- TCK characteristics related to work



## Ruth says...

---

- “Some young adult TCKs [appear] not able to make up their minds about what they want to do with their lives, where they want to live, and whether or not they want to "settle down. They have what some call prolonged adolescence”
- Others... have delayed adolescence they do all the expected things at the expected time, then throw it all over for a complete change

*Ruth Hill Useem*

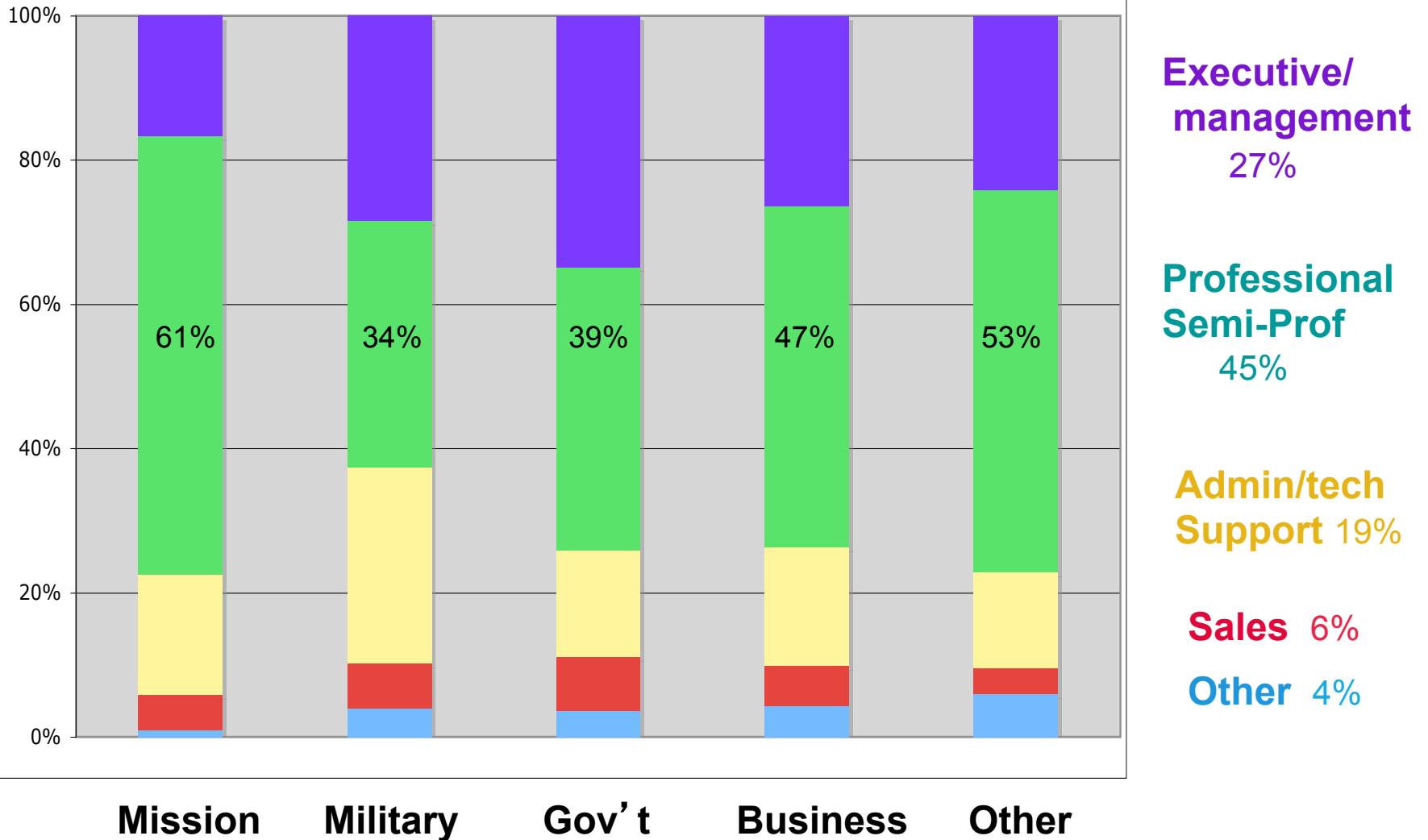


# TCK variables

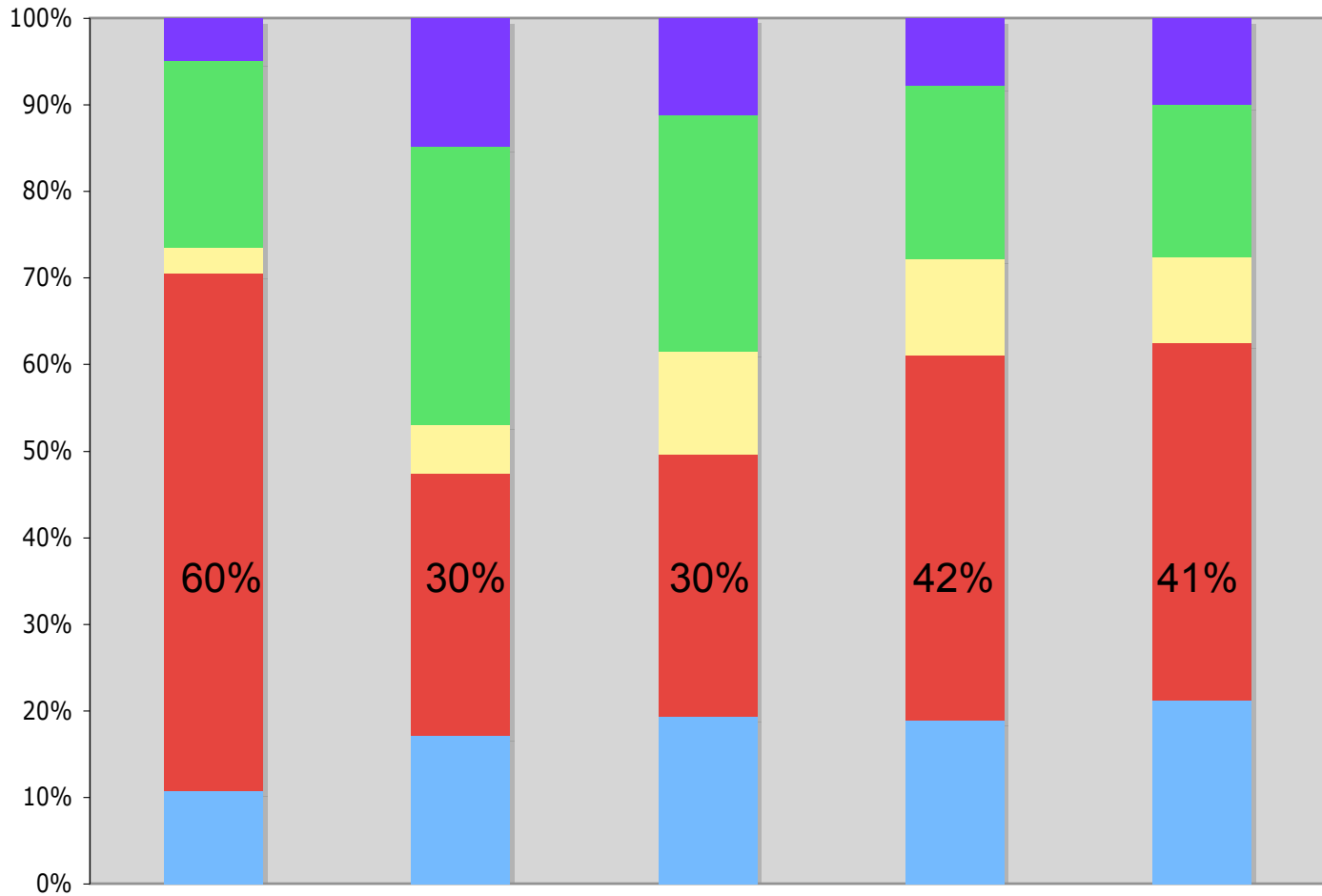
---

- Length of time outside US
- Number of different countries
- Number of moves
- Age at re-entry
- **Age at responding**
- **Gender**
- **Sponsor**

# Current or Last Occupation by Sponsor



# Current or Last Employer by Sponsor



**Government/  
Military** 17%

**Business /  
Finance** 25%

**Professional** 8%  
(not medical)

**Ed / soc service /  
Religious** 39%

**Self / arts /  
Media** 17%

**Mission**

**Military**

**Gov't**

**Business**

**Other**



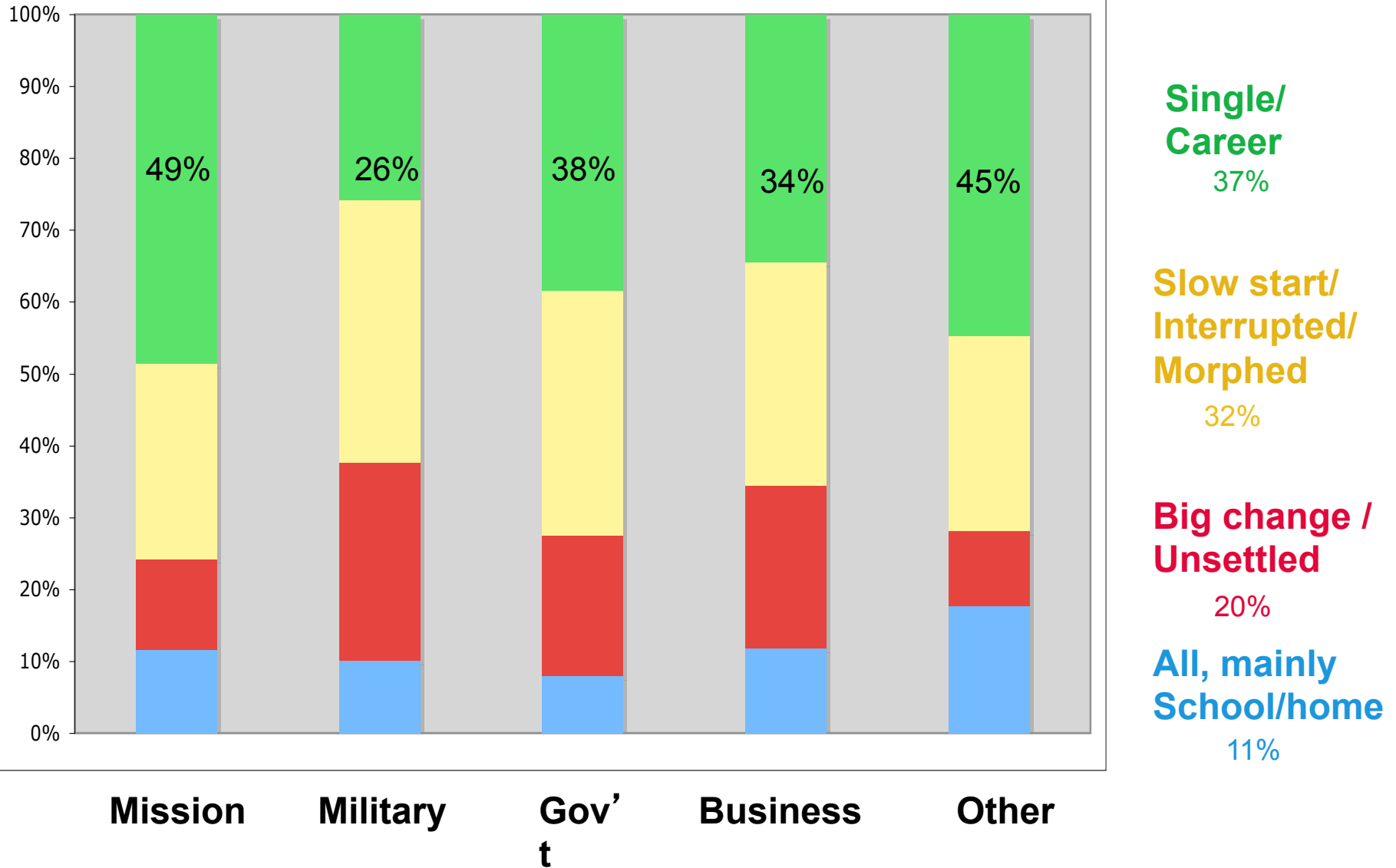
# Career History

---

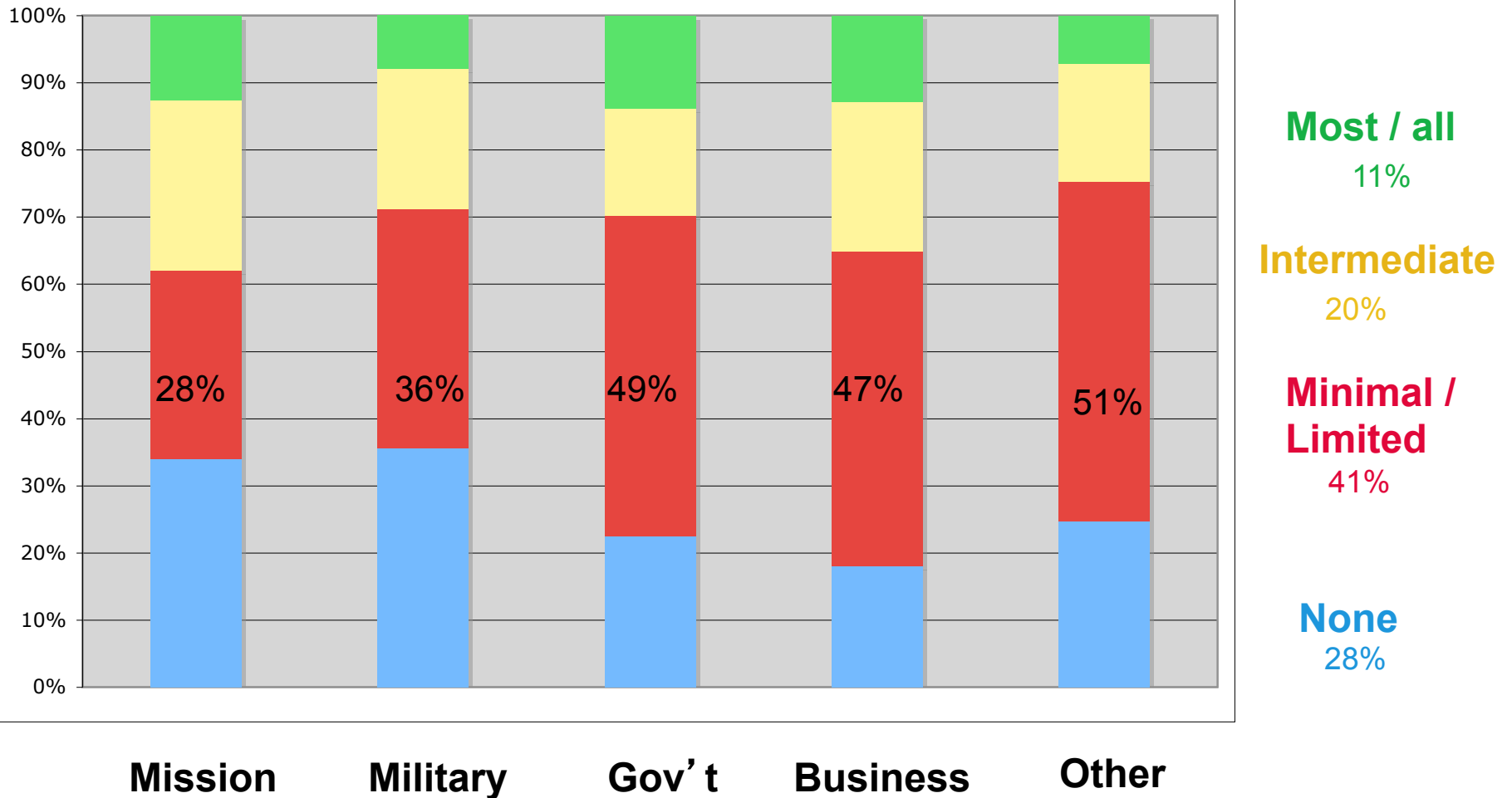
- 11% all or primarily student/homemaker
- 37% single career
- 17% “morphing” career
- 16% slow start / interrupted career
- 6% big change/s



# Career History by Sponsor



# International career history by Sponsor





# Work relevant TCK traits

---

- Cultural Knowledge

  - Language

  - Culture rules



# Work Relevant TCK Traits

---

- Cultural Knowledge
  - Language
  - Culture rules
- Adaptable, flexible, resourceful



# Work Relevant TCK Traits

---

- Cultural Knowledge
  - Language
  - Culture rules
- Adaptable, flexible, resourceful
- Helpers & problem solvers



# Work relevant TCK traits

---

- Establish relations easily,  
Can relate to anyone
  - Shared experience, empathy



# Work relevant TCK traits

---

- Establish relations easily

Can relate to anyone

Shared experience, empathy

Non-judgmental interest



# Work relevant TCK traits

---

- Establish relations easily,  
Can relate to anyone
  - Shared experience, empathy
  - Non-judgmental interest
  - Understand different views





# Work relevant TCK traits

---

- Establish relations easily,  
Can relate to anyone
  - Shared experience, empathy
  - Non-judgmental interest
  - Understand different views
  - Observe & listen



# Work relevant TCK traits

---

- Moving on